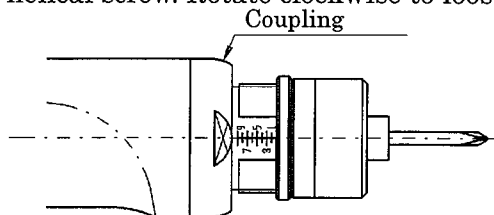


Installation Procedure of DLP5300 Vacuum Pickup Attachment

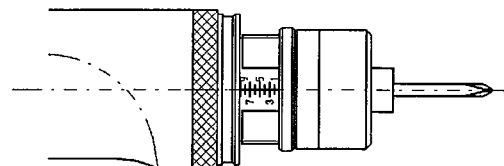
This vacuum pickup attachment is designed only for DLV7410A/5720 Series electric screwdrivers.

1. Remove the coupling.

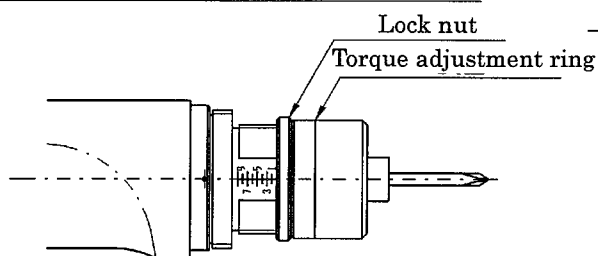
(Inverse helical screw. Rotate clockwise to loosen.)



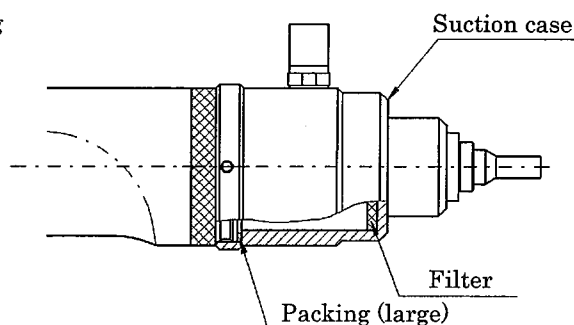
5. Attach the torque adjustment ring and lock nut.



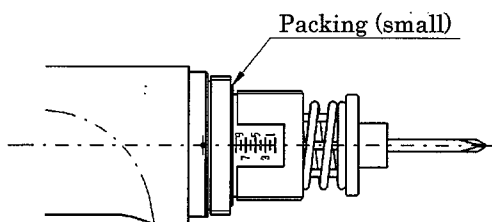
2. Remove the torque adjustment ring and lock nut.



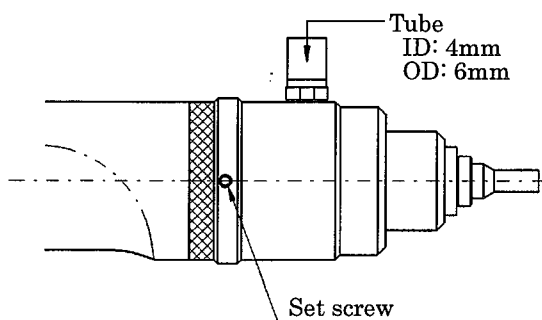
6. Attach the suction case. (Confirm that a packing and filter are placed in the suction case.)



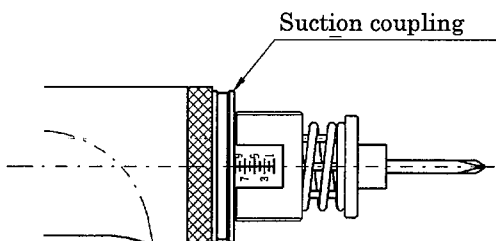
3. Attach the packing (small).



7. Determine the position of the tube by rotating the suction case and tighten the set screw.



4. Attach the suction coupling.



Note:

- 1) Do not forget to attach the packing. Otherwise, the suction strength will decrease.
- 2) Before adjusting the torque or replacing the bit, remove the suction case.
- 3) Clean the filter periodically.
- 4) Two suction sleeves are attached: DLS2120 (red) and DLS2124 (pink). For other sizes of the suction sleeves, please refer to the DELVO union catalog.